

Pathways:

From Temporary to Permanent Immigration

Jeanne Batalova

Evaluating Immigration Projections

September 26, 2006



Two Systems: Goals and Structure

Permanent Immigration

- Family reunification (e.g., spouse of US citizen)
- Employment sponsorship (e.g., multinational executive)
- Humanitarian protection (e.g., refugee from Sudan)

Temporary Admissions

Foreign nationals are admitted temporarily to engage in a certain activity:

- Work
- Tourism
- Conduct business
- Study

Two Systems: Goals and Structure

Permanent Immigration

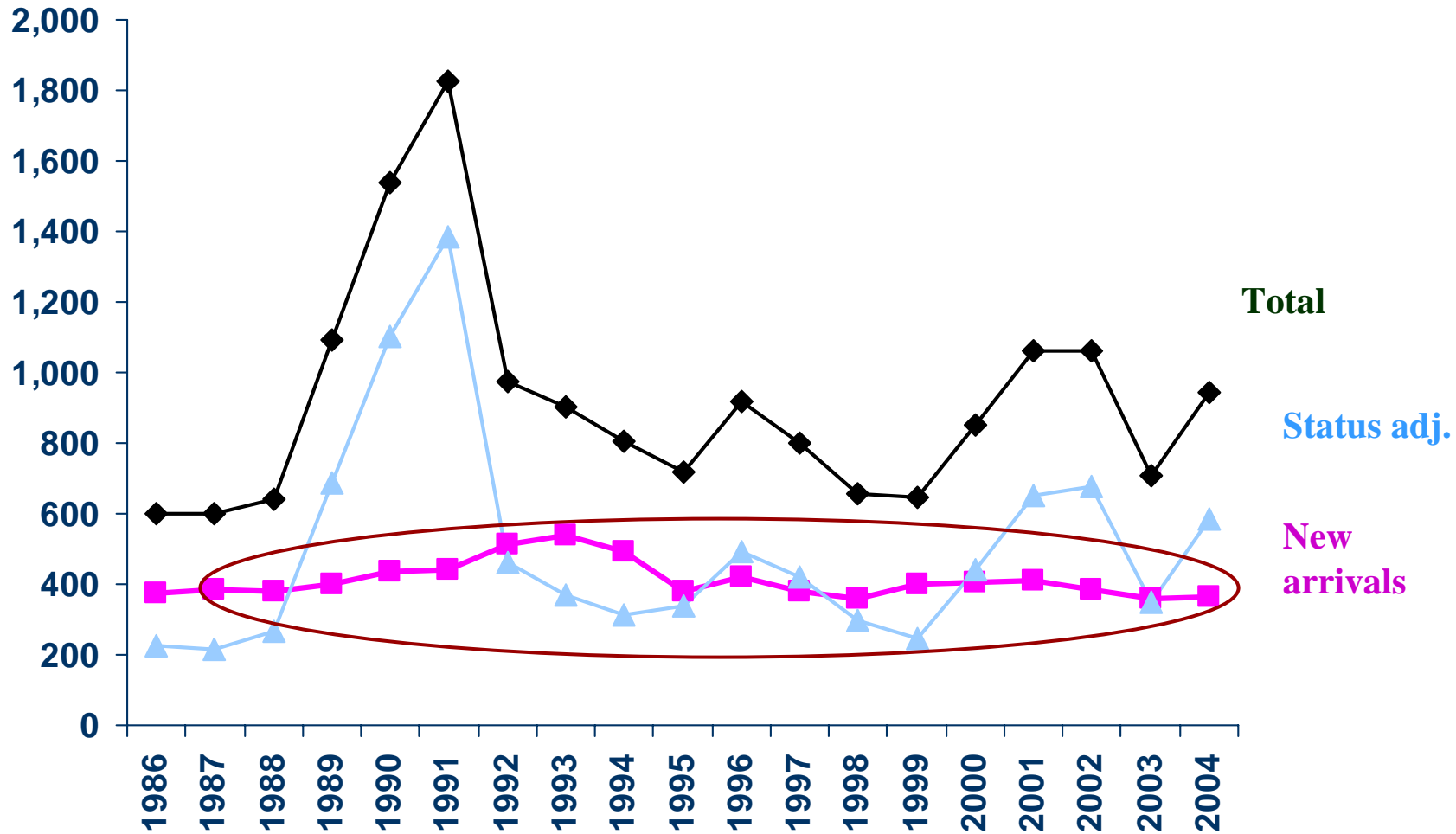
- Family reunification (e.g., spouse of US citizen)
- Employment sponsorship (e.g., multinational executive)
- Humanitarian protection (e.g., refugee from Sudan)

Temporary Admissions

Foreign nationals are admitted temporarily to engage in a certain activity:

- Work
- Tourism
- Conduct business
- Study

Immigrant Admissions



Transitional Visas

Immigration and Nationality Act (INA)

Section 214(b): **foreign residence requirement**

Exception to the rule:

Employment visas: H-1B, L-1, O-1

Family and humanitarian visas: V, K, T, U



Temporary visas as *transmission belts* to LPR status

Flexibility of Temporary System

Permanent system: 1990

vs.

Temporary system: almost every year

US employers came to rely on the temporary system to gain access to foreign workers

Conclusion

Temporary to permanent system
→ *Transitional system*

Data issues

Migration Policy Institute

- The Migration Policy Institute (MPI) is an independent, non-profit, nonpartisan think tank dedicated to the study of the movement of people worldwide.
- MPI provides knowledge-based analysis, policy development, and evaluation of migration at the local, national, and international levels.

www.migrationpolicy.org

www.migrationinformation.org