

GLOBAL COMPETITION FOR INTERNATIONAL STUDENTS

Friday, March 31st

Harris Building*

Conference Room Suite 1300, 1st Floor

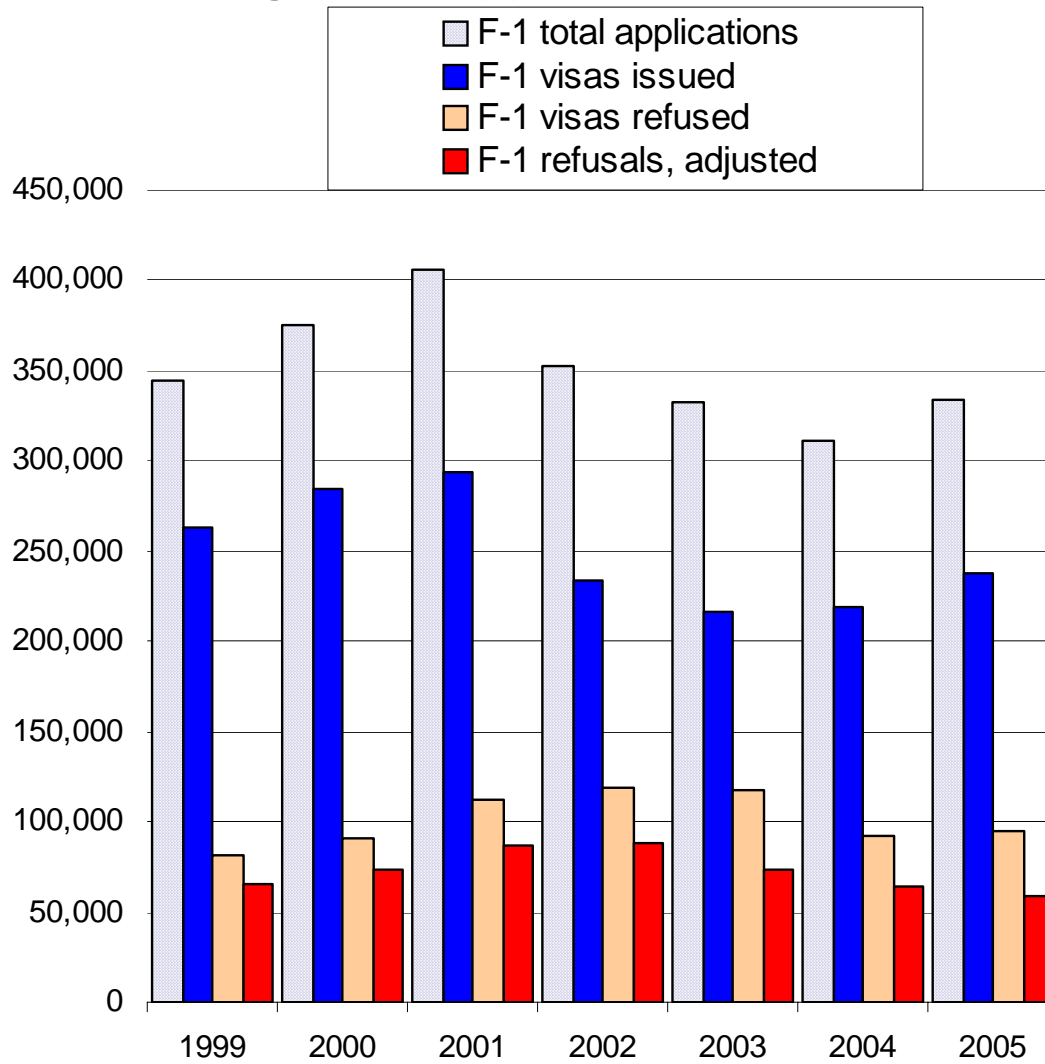
3300 Whitehaven Street, NW

Washington, DC 20007

Tel: (202) 687-2258

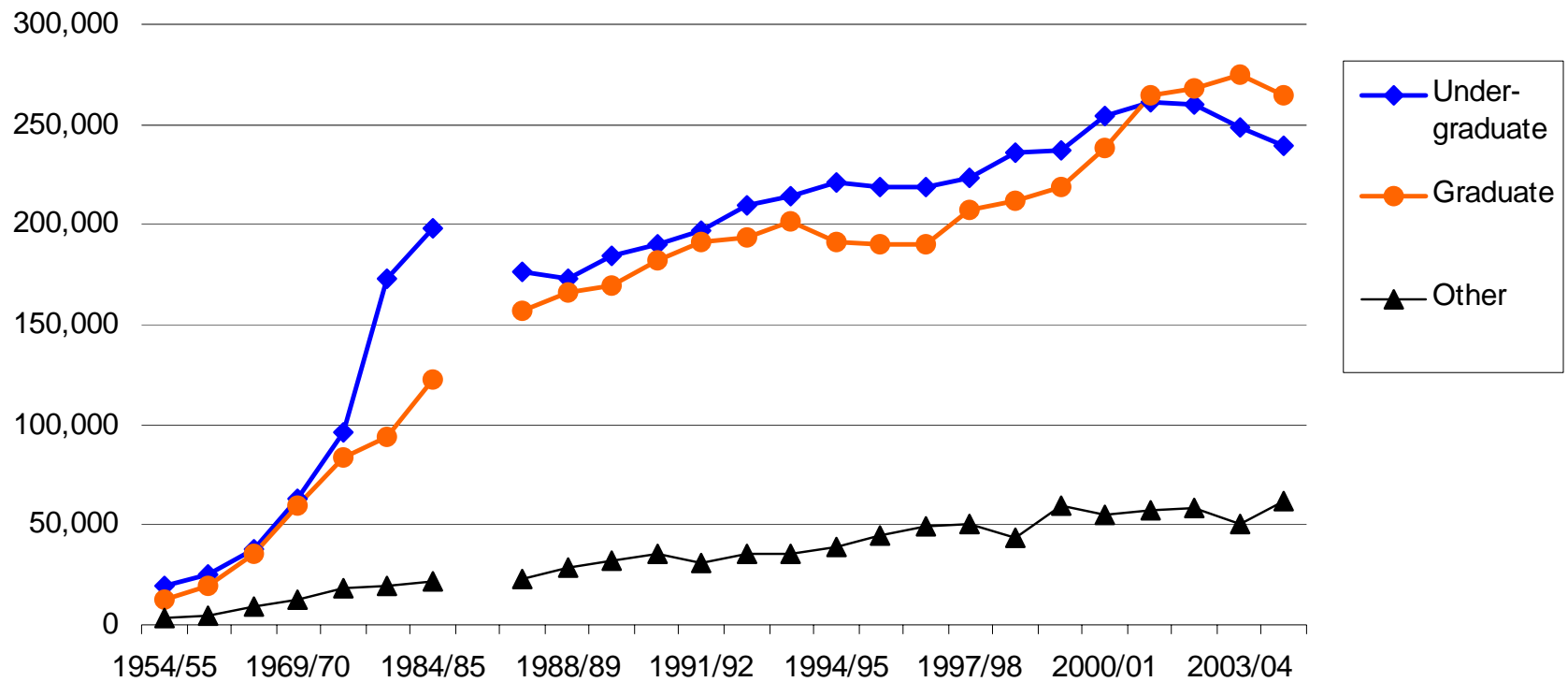


Foreign Student (F) Visas Issued and Refused



Source: Dept. State Visa Report, <http://travel.state.gov/visa>

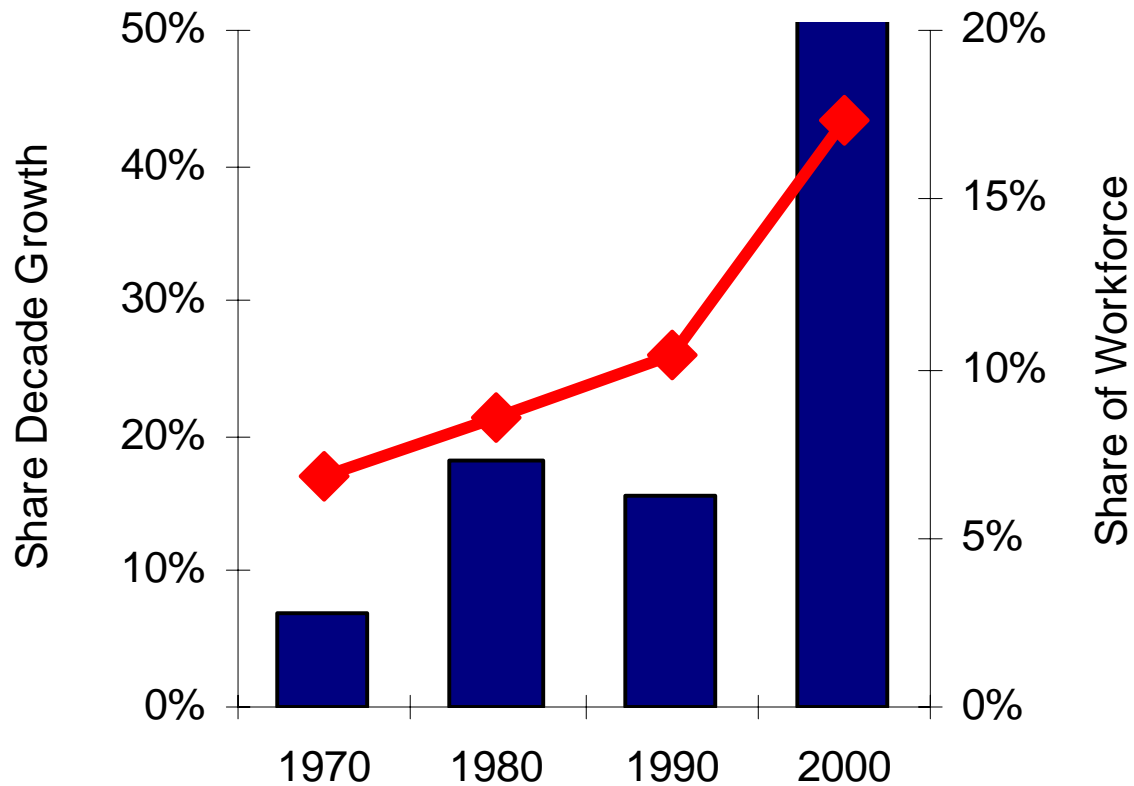
All Foreign Students by Academic Level, Selected Academic Years 1954/55 to 2004/05



Source: IIE Open Doors, <http://opendoors.iienetwork.org/page/69688/>

Immigrant Share of S&E Employment

■ Immigrant Share of Workforce Growth
◆ Immigrant Share of Workforce



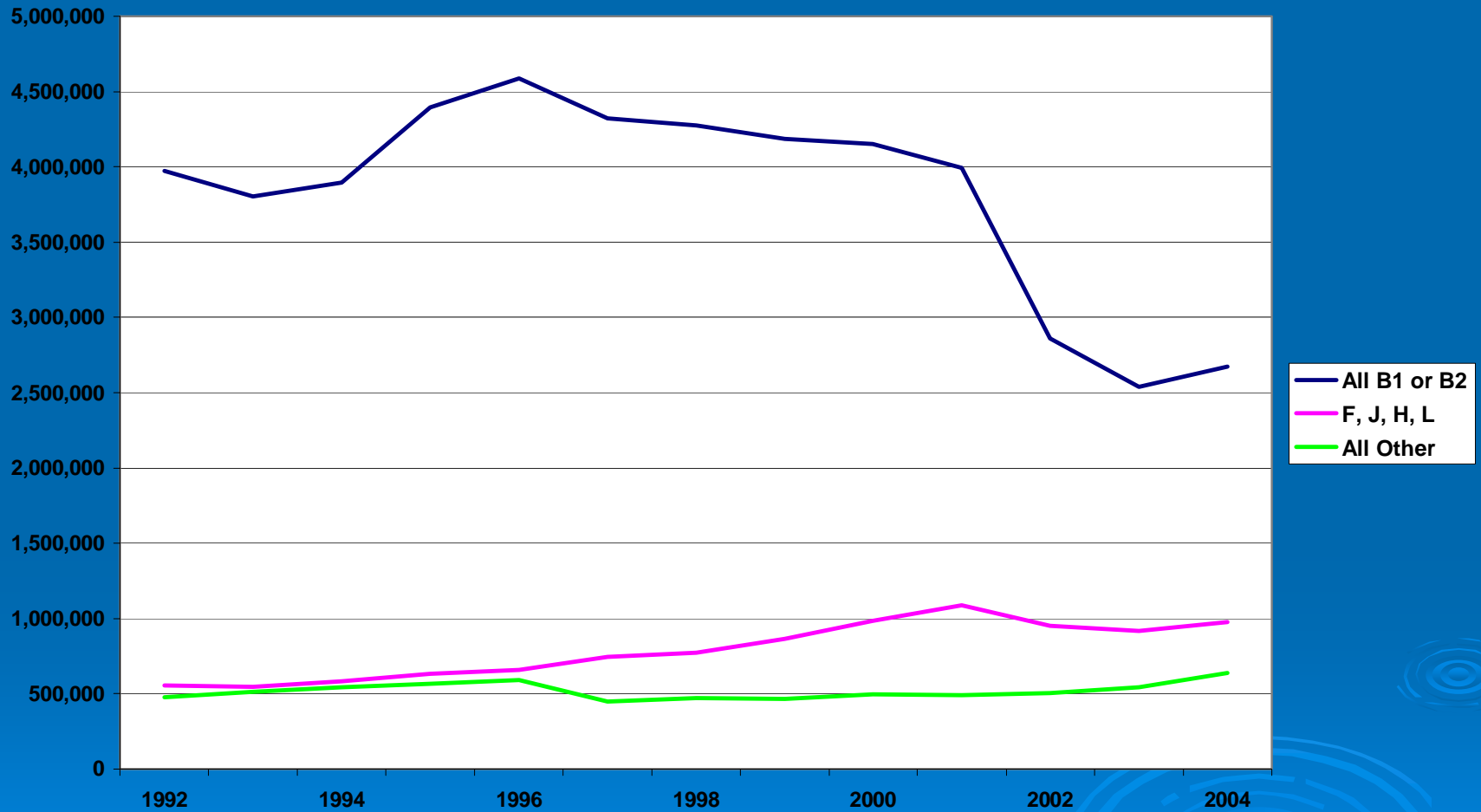
Source: Tabulations from US Census microdata

EXHIBIT 2: Trend in Foreign-born Share of S&E Employment

	1990	2000	2004
Bachelors	11%	17%	17%
Masters	19%	29%	32%
All PhD	24%	38%	37%
PhDs < 45	27%	52%	—
Post-Doc	49%	57%	--

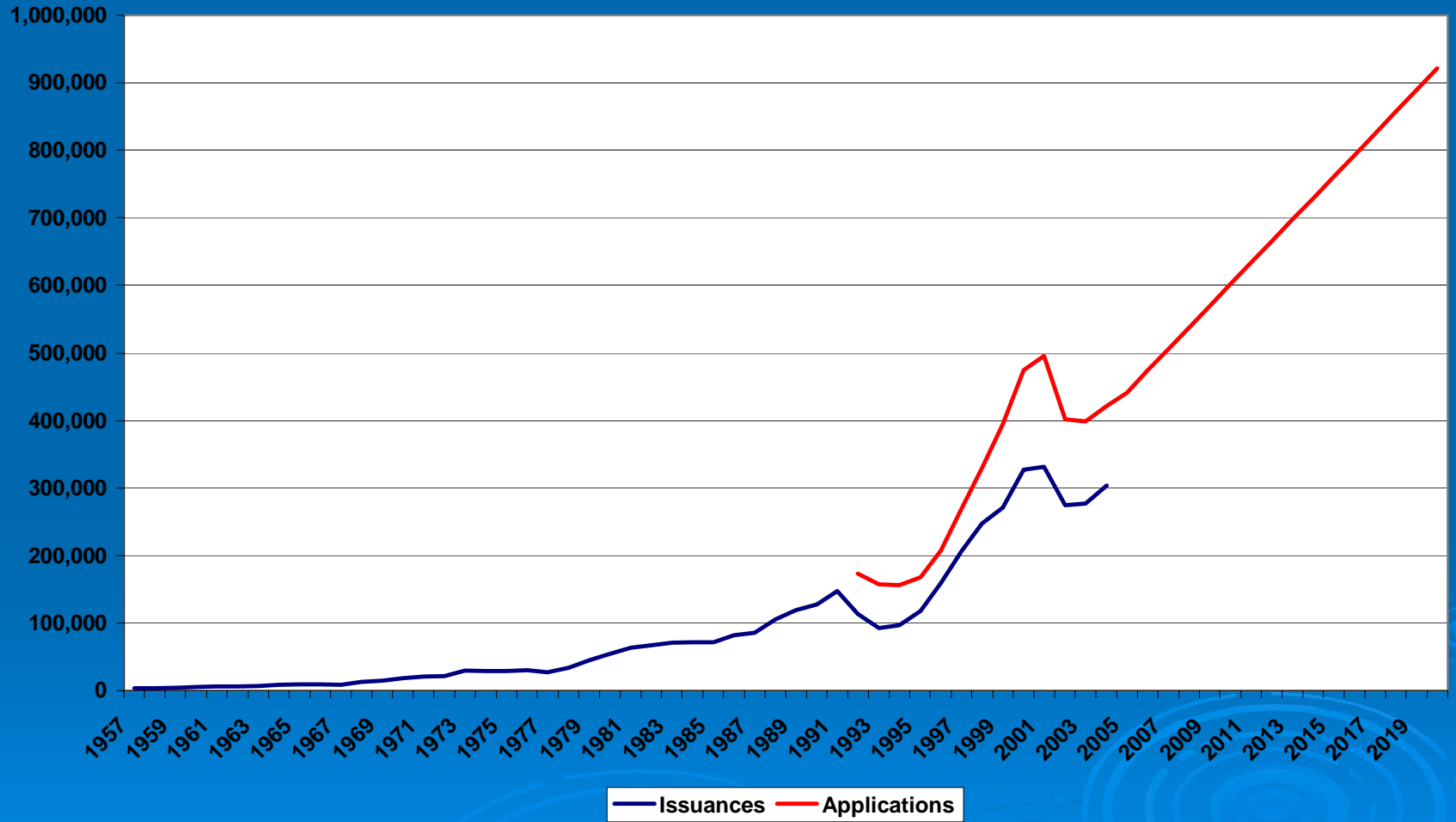
Source: Richard B. Freeman, 2005. "Does Globalization of the Scientific/Engineering Workforce Threaten U.S. Economic Leadership?" NBER Working Paper 11457. Data from US Census, CPS, and NSF.

Figure 3.1 Non-Immigrant Visa Issuances by Major Visa Class

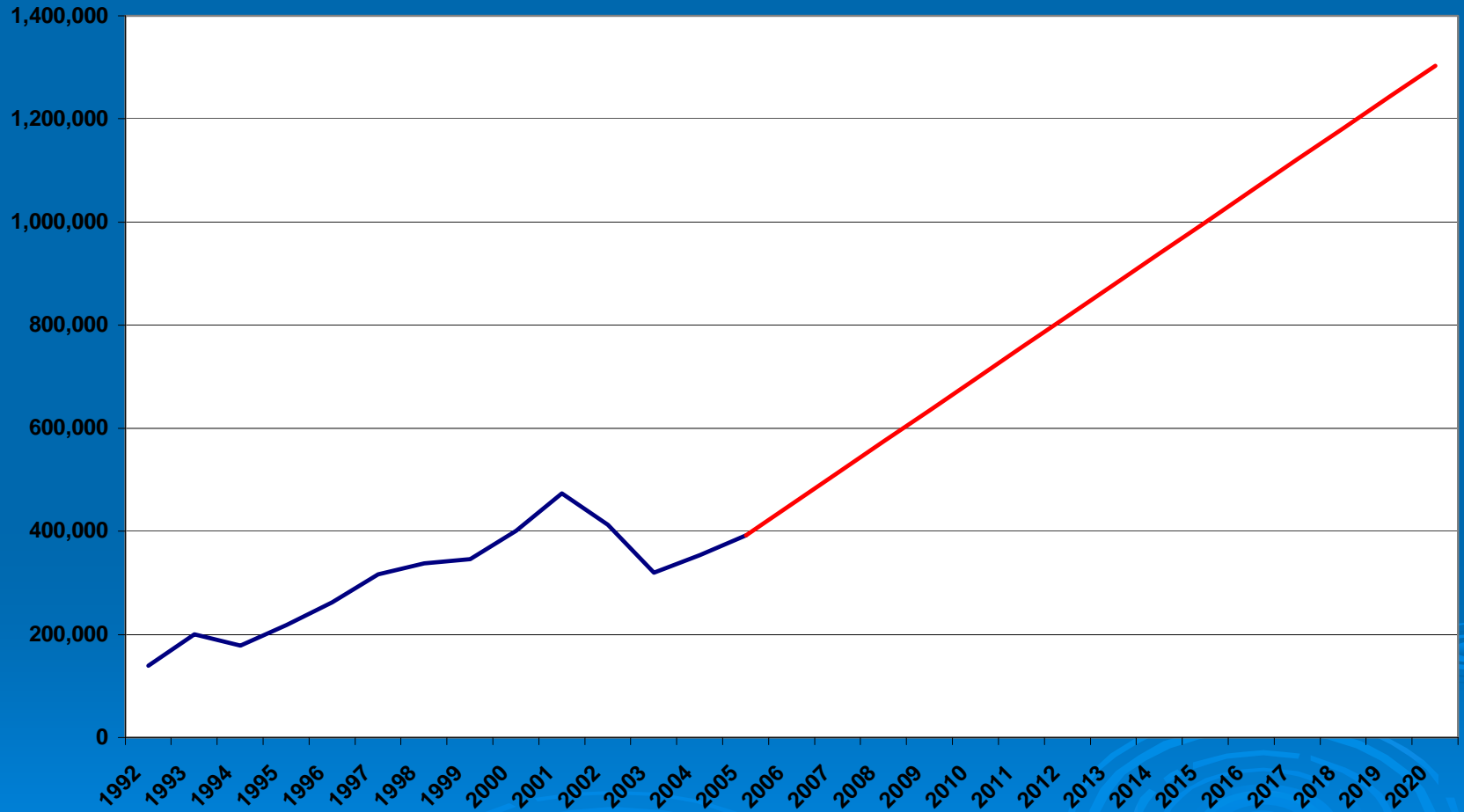


Source: http://travel.state.gov/visa/about/report/report_2541.html

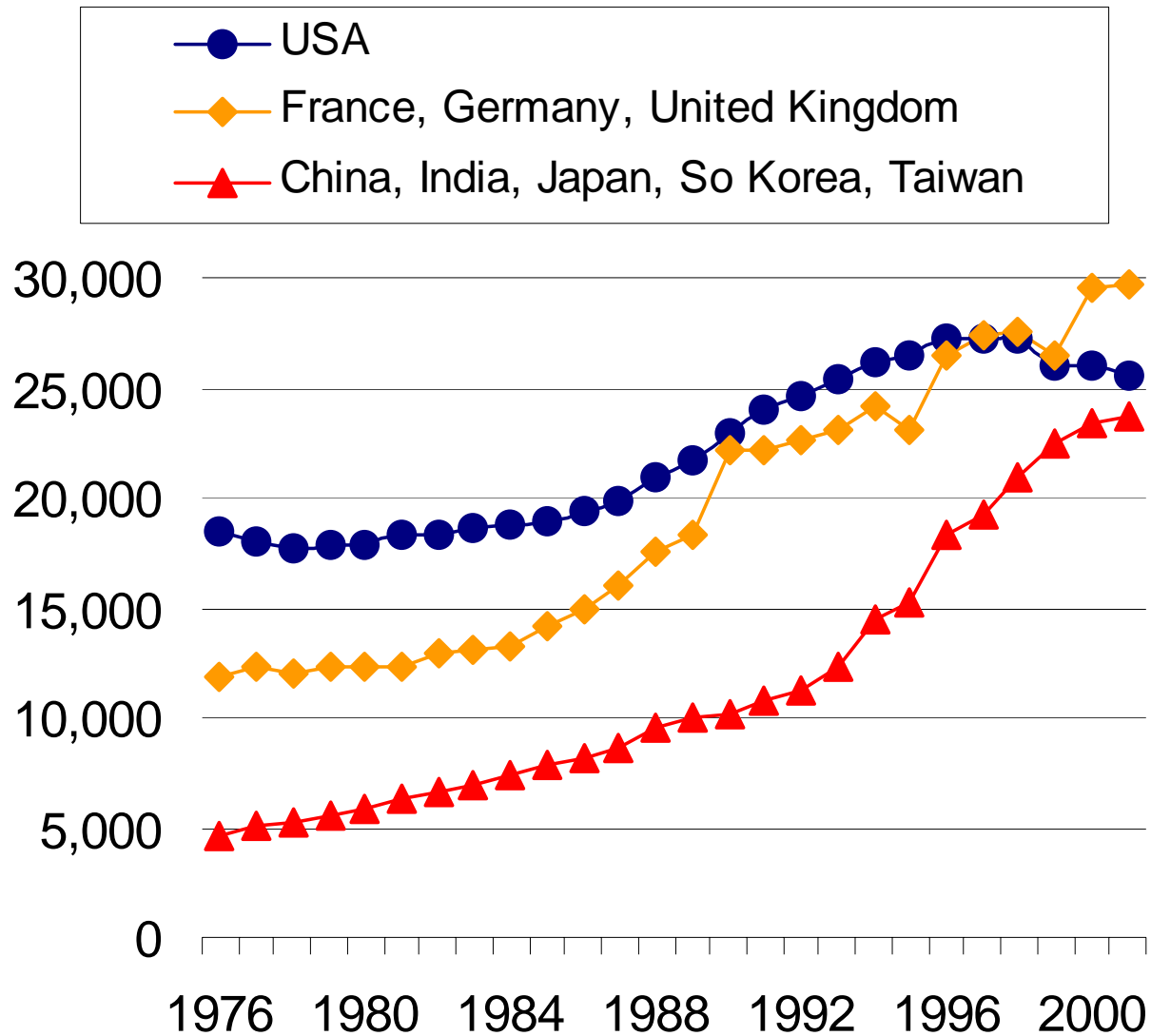
India Non-Immigrant Visas Observed (1957-2004) and Projected (2005-2020)



China Non-Immigrant Visa Applications Observed (1992-2004) and Projected (2005-2020)

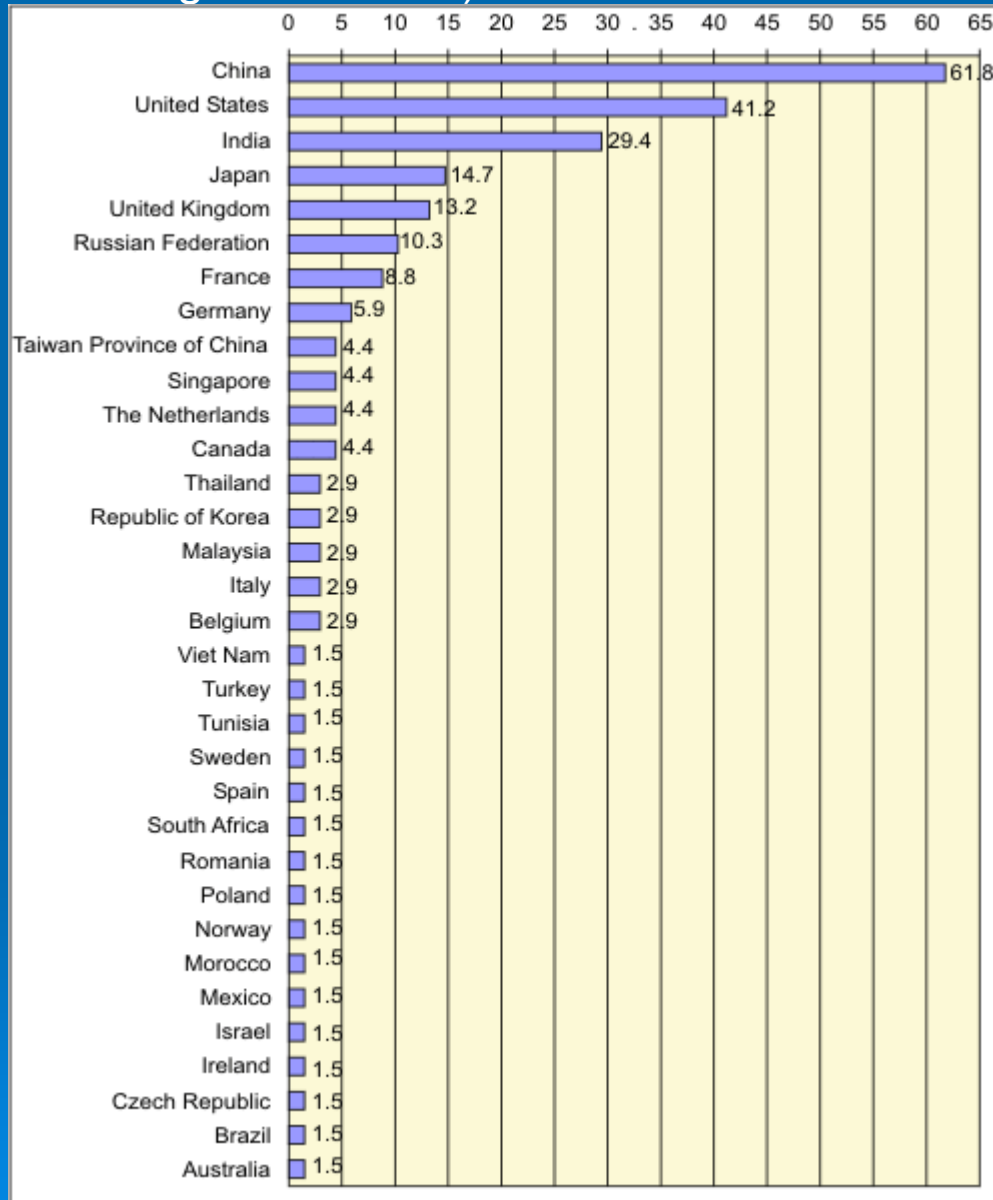


S&E Doctoral Degrees, 1976-2001



Source: NSF S&E Indicators 2004

Figure 2: Most attractive prospective R&D locations, 2005-2009 - (Per cent of respondents mentioning the location)



Source: UNCTAD, World Investment Report 2005